

Zenica

and its Green Infrastructure

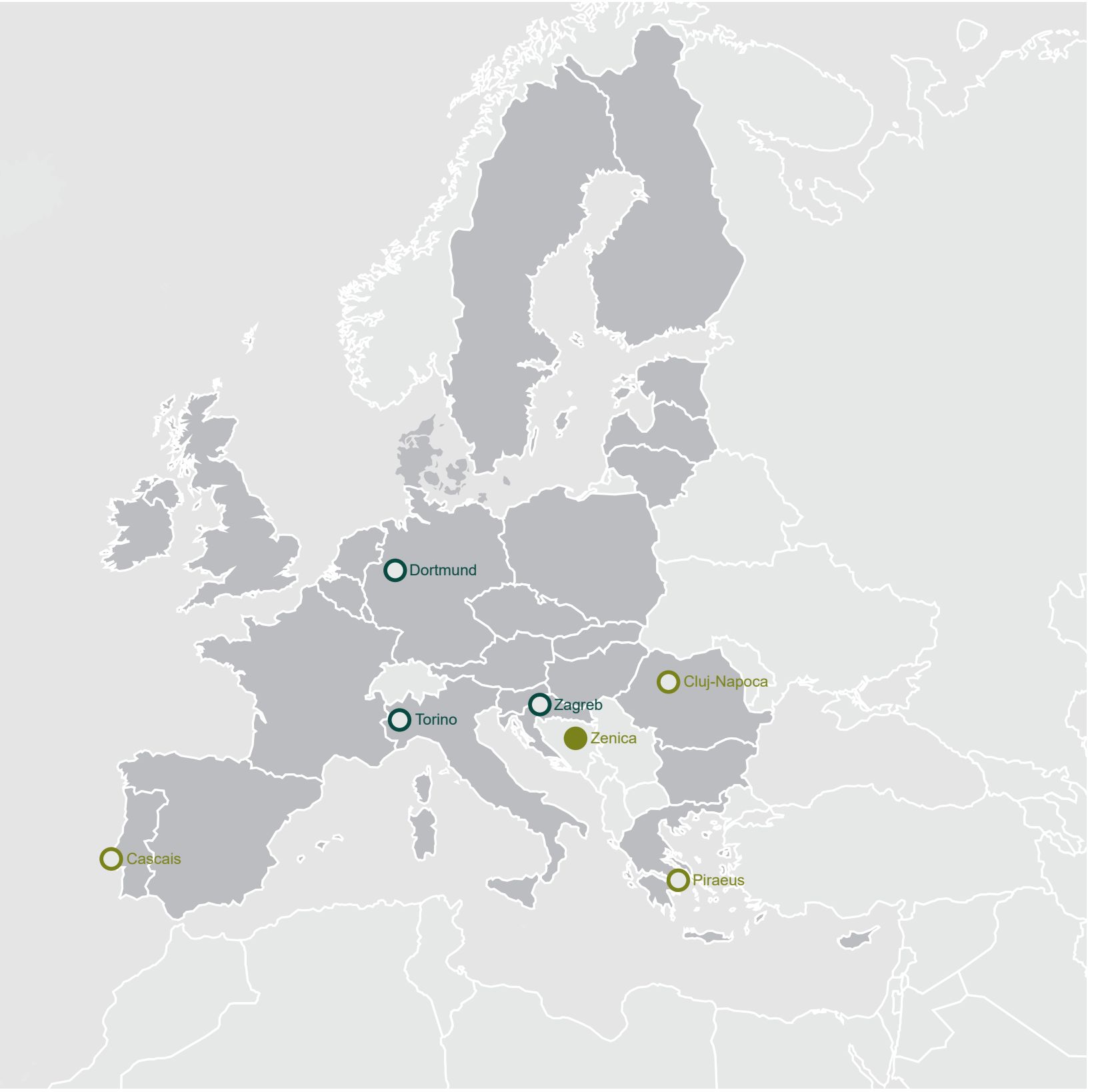
the Impact of Industries on the City's GI

The city of Zenica takes up the area of 558,5km². It is located in the River Bosna valley at the altitude of 316 m. Its mountains reach the height of 1.304 m with Tvrtkovac as the highest mountain peak. Zenica is situated 70 km north from Sarajevo.

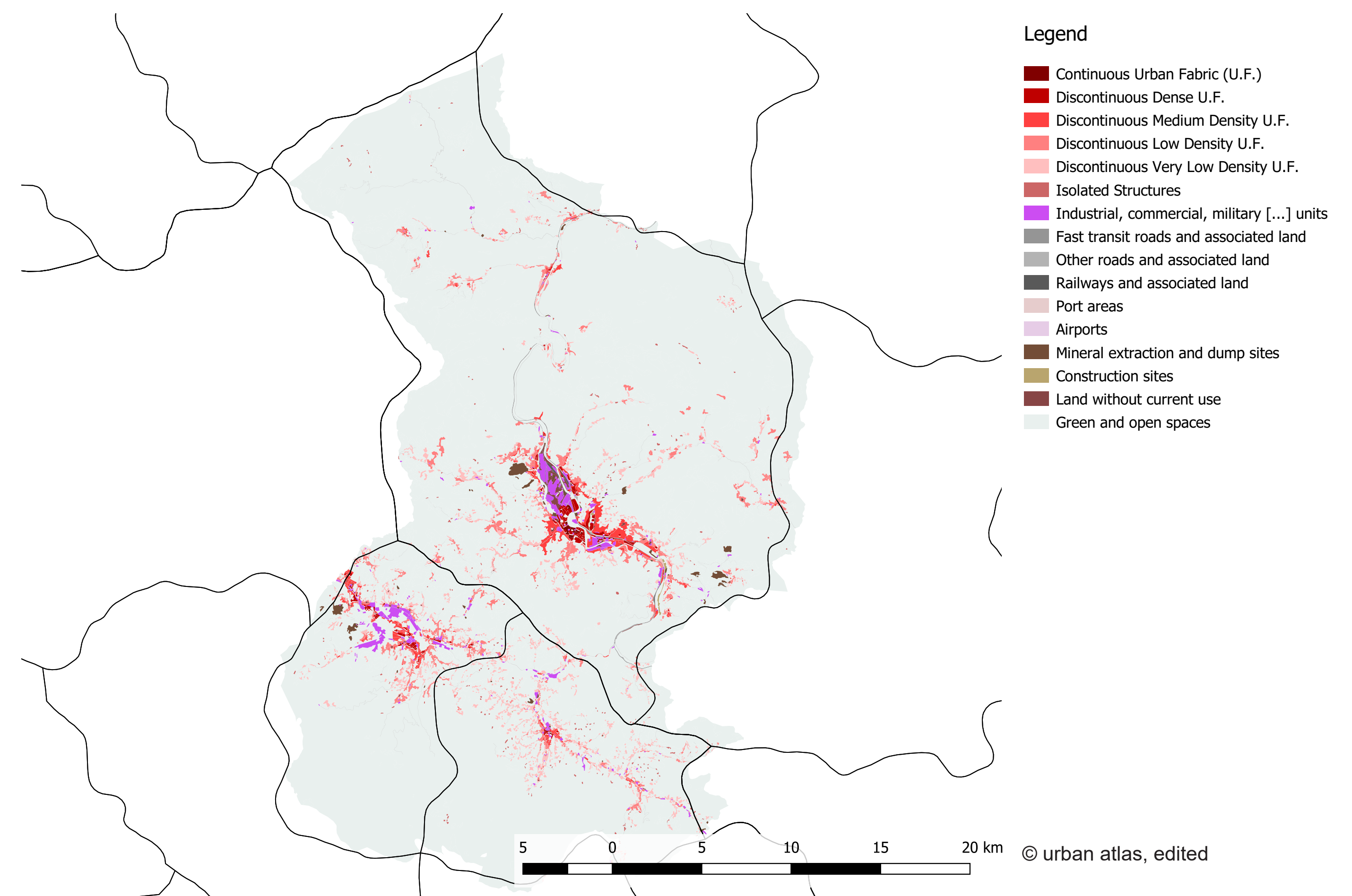
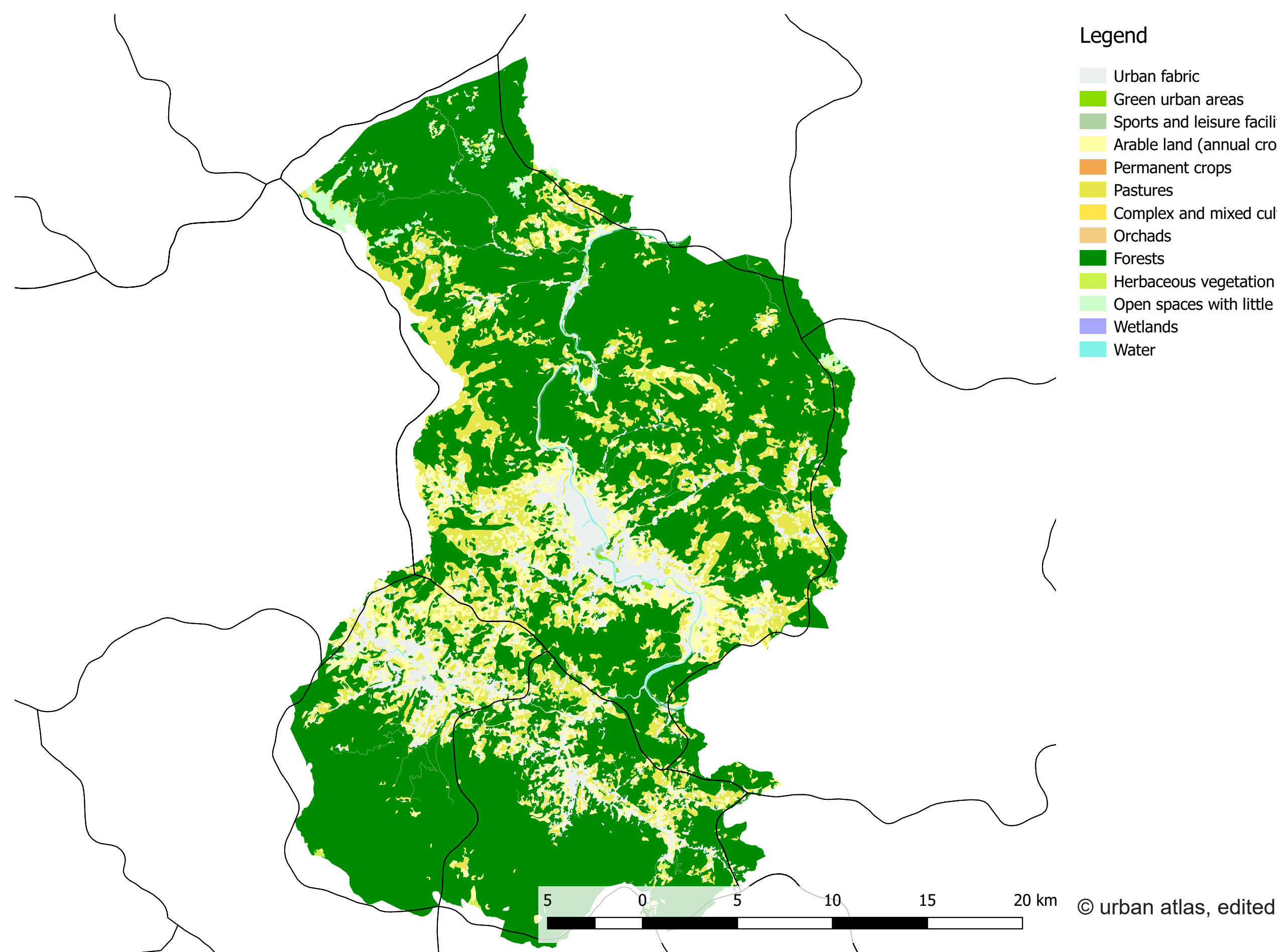
The city is an administrative, political, economic, cultural and sports seat of Zenica-Doboj Canton, composed of 12 municipalities. It is estimated that around 115 000 people live in the city at present. The population is composed of various ethnic groups, cultures, faiths and traditions interwoven with the long-standing tradition of a community spirit in former Yugoslavia.

Zenica was called a steel metropolis, the capital of mining and metal processing industry. Steel and coal, as well as metal processing still remain its main industries, though significantly accommodated to the present market conditions. The steel production is organized as a manufacturing unit of the world largest steel producer ArcelorMittal. Other industries are increasingly visible as a result of the process of setting up a number of small and medium-sized companies.

Kamberovića field is the first circle of Zenica's green infrastructure. It is a skillfully designed oasis, decorated with extremely beautiful bushes and trees, divided by walking, jogging and cycling paths that follow the river line and offer the guests the best possible way to get a first impression of the town and its inhabitants. It is the epicenter of all recreational facilities in the town with the City Arena, a stadium, tennis courts and gyms. The traffic jams are not felt at this part of the town since the recreational routes stretch along the river and the bridges providing a good isolation from the urban area. The city is located in a basin of river Bosna and surrounded by hills and small mountains. Configuration of the land does not go into the favour of the city expansion. We have a very limited land for any major makeovers. On top of that, the city is a home to world's largest producer ArcelorMittal which takes 184ha of the city's territory. Our business zone is located only a few kilometres from the center and takes up 33,64 ha of land. The garrison take us up 16,24ha of land and prison about 17ha of land respectively. Presence of heavy industry which continuously pollutes the city and limited availability of the land represent major urban regeneration challenges.



Green Infrastructure



© ZEDA - Zenica Development Agency

Školska Street - Urban tree canopy in of the streets in the city.



© ZEDA - Zenica Development Agency

City Boulevard - Bioswales on the city's Boulevard.



© Naša Rijeka Zenica

Kamberovića field is protected green urban area within the city with playgrounds, sports fields, jogging, walking and cycling paths along river Bosna.



Zenica

and its Potential NBS

Follower City

Regeneration Challenges



© Emir Čaplja

Kamberovića field
Flooding in urban area due to heavy rains



© ZEDA - Zenica Development Agency

Socially deprived settlements
Area nearby ArcelorMittal company.



© ZEDA - Zenica Development Agency

Business Zone Zenica 1
Need for more green infrastructure for the remaining free space in the business zone.

Potential NBS

NBS no.5 capillary GI on walls and roofs

Unsanitary landfill of industrial waste which is still partly in use by ArcelorMittal.
This area has a great potential for recultivation of the land, which is currently useless and dangerous. Current landfill site can be put in a use for local communities.

expected benefits:

- Planting of trees for prevention of land sliding
- Space for leisure activities
- Improvement of quality of life for local community

NBS no.6 making post-industrial sites and renatured river corridors accessible for local residents

River banks need intervention

expected benefits:

- New cycling and walking trails
- Upgrade of quality of life for residents
- Urban regeneration

NBS no.4 aquaponics as soil-less agriculture for polluted sites

Several communities are under direct influence of ArcelorMittal and have contaminated soil.

expected benefits:

- New approach to food production
- Sustainability for households
- Healthier products



© City of Zenica

Industrial landfill Rača



© ZEDA - Zenica Development Agency

River Bosna



© Emir Čaplja

Zenica Suburbs

Thanks for contribution to: Amra Mehmedić, Mirza Sikiric, Emir Čaplja, Lejla Brijevac

