



Living Lab Dortmund-Huckarde



NBS 8

Pollinator biodiversity

HansaGrün

Naturfelder.de 

Improving and monitoring
pollinator biodiversity in
Huckarde



NBS description

The necessity to re-establish flowering meadows and natural living spaces in urban areas to recreate habitats especially for pollinating insects has become increasingly important. Biodiversity projects have gained acceptance and wide support in large parts of the society. Implementations are low cost, require comparatively low planning effort and possible on plots available for temporary use.

The citizen-led association "Naturfelder Dortmund e.V." was founded in 2021. Since then, the association managed to motivate interested citizens in joining the group, acting as a catalyst for seeding projects that otherwise might not have been realised.

Since 2020, more than 10 areas within and outside the Living Lab Huckarde (e.g. park areas) have been converted into extensively cared for biodiversity spaces featuring regional grasses and flower seeds. The pollinator-friendly plants offer living and nourishing habitats providing rich food sources such as pollen and nectar for pollinating insects.

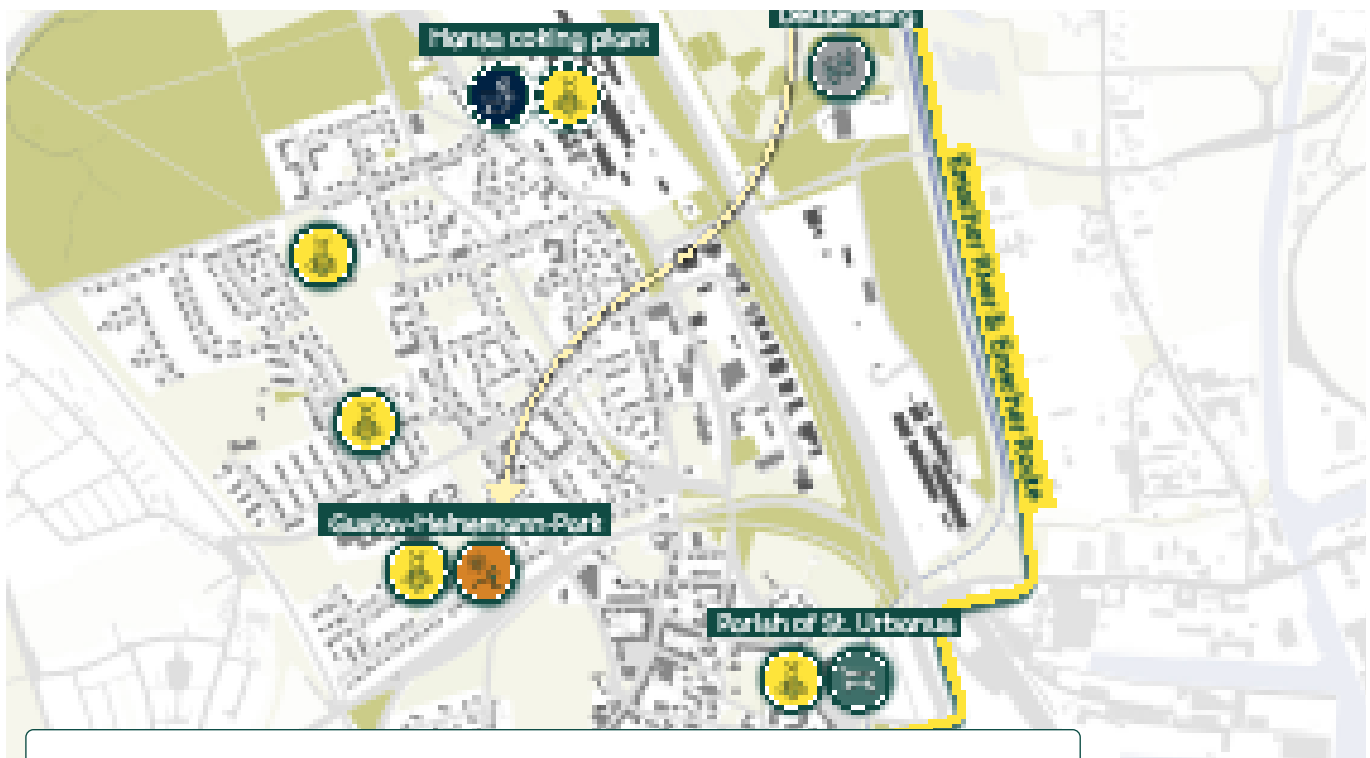
Area of implementations

Flower meadows have been implemented on several locations in the Living Lab and other city districts.

Aim & goals

Naturfelder Dortmund e.V. was founded in order to convert urban spaces into pollinator friendly habitats. The structure of the association allows long-term existence beyond proGReg. Main goals of the NBS implementations include:

- Activating interested citizens from the Huckarde and Deusen district for pollinating insects and biodiversity topics
- Sowing flower meadows or planting insect friendly plants that increase biodiversity on public or private land in cooperation with owners
- Participating in events to inform about pollinator friendly measures
- Supporting citizens or groups: implementation of pollinator friendly areas on their land
- Offering workshops in schools: e.g. sowing flower meadows, building insect houses
- Supporting projects of the municipal Department of Green Spaces: e.g. proposing usable areas for sowing or helping to irrigate newly seeded areas
- Involving a wide range of citizens, including vulnerable groups in co-design and implementation actions such as children in the seeding activities.

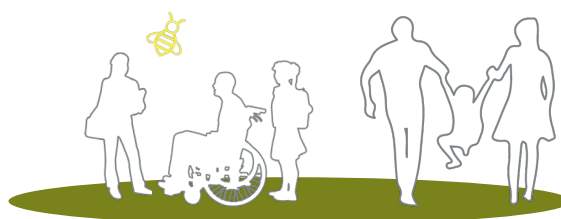


GPS coordinates: 51.531225883009036, 7.4200856108000135; 51.53316186588006, 7.409193049796729; 51.54704697306564, 7.4277988637637815; 51.537983485247196, 7.404910941102673

Target groups (beneficiaries)

Key beneficiaries include:

- all residents of Huckarde and neighbouring districts
- families in Huckarde
- individuals
- School students



Stakeholder constellations

Main responsible partner

South Westphalia University of Applied Science (SWUAS)

ProGReg partners involved

City of Dortmund, Department of Green Spaces: selecting locations, soil preparation activities, seeding, and maintaining the biodiversity spaces.

Die Urbanisten e.V:

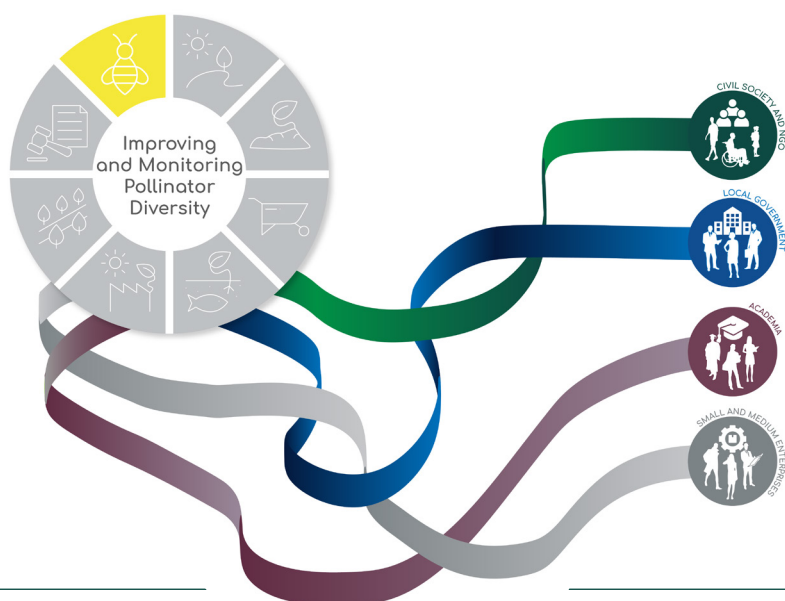
- public communication within other living lab events such as local seed festival and presenting the project in public events (e.g. Students for Future)
- media campaign for citizen activation
- co-founding of Naturfelder Dortmund e.V. association

Other stakeholders involved

- N.A.B.U. Dortmund, B.U.N.D. Dortmund: Environmental organizations that advise the Naturfelder association with expert knowledge on biodiversity
- Emschergenossenschaft und Lippeverband (EGLV): Provision of sites for implementation
- Members of the association Naturfelder e.V. co-implement and actively co-manage NBS activities



Co-design activities, stakeholder engagement, and pre-implementation activities



Stemming from a bottom-up citizen-led initiative, the co-design process created a growing multi-stakeholder network that overcame a number of challenges at the beginning of NBS design and implementations, despite the limitation caused by the pandemic.

Planning and preparatory activities (administrative and technical procedures)

Finding sites for the seeding activities proved time-consuming due to several reasons:

- Housing companies were contacted in vain.
- Site visits on the former landfill Deussenberg revealed that the selected 1 ha area already benefitted from high ecological value.
- Contact to the Department of Green Spaces, City of Dortmund led to a cooperation for seeding on intensely cared for green areas in public parks (e.g. allotment area "Glückauf Hansa", Gustav-Heinemann-Park).

In 2019, the Department of Green Spaces started a Dortmund-wide initiative "Stadtgrün naturnah" ("green city spaces close to nature") for creating biodiversity habitats mainly in public parks. This cooperation created a win-win-situation, enabling the conversion of Huckarde areas earlier than planned. Grass and flower seeds typical for the Dortmund region have been selected in cooperation. The Department of Green Spaces ordered seeds twice, being refinanced by SWUAS.

SWUAS and Die Urbanisten established an NGO to identify new seeding areas for this NBS. The association Naturfelder Issum served as prototype.

Implementation budget

Total implementation budget: 2,000 €



ProGrieg budget for material costs has been transferred directly from SWUAS to projects partners in charge.



(c) R. Morgenstern

Co-design and engagement activities

ProGleg project partner aquaponik manufaktur GmbH had founded an association called Naturfelder e.V. that converts plots into flower meadows in Issum, Germany. This concept has been adapted for the Dortmund Living Lab in collaboration with the Urbanisten and SWUAS in autumn 2020. Members of the association include activists and agriculture, permaculture and nature conservation experts.

The first co-design meetings took place online during Covid-19 lockdowns. Experts of pollinator diversity and general biodiversity from NABU and the City of Dortmund participated. This cooperation identified suitable spaces for conversion in public areas and selected regionally produced seeds most beneficial to increase pollinator biodiversity.

Therefore, contact with participants took place online but limited the target group, excluding potential participants who were less proficient with digital technologies, e.g. retirees who are nature-oriented, interested in 'hands on' nature projects and have time.

- Building trust during online sessions with the participating groups in comparison to physical meetings is more difficult.
- Lengthy approval processes to gain tax privilege "for the common good" due to missing information of the paperwork
- This in turn hindered opening a bank account, which is necessary to attract new members. After more than a year, the association was legally registered to run its operations smoothly.
- Naturfelder e.V. members co-manage the NBS

Key achievements and implementation results

Naturfelder Dortmund has carried out soil preparation, seeding and irrigation at 10 sites in Dortmund. The first site was seeded in cooperation with the regional association EGLV (Emscher-Genossenschaft und Lippeverband) in spring 2021, even before the association was founded.

Success factors for social innovation (trust and liability) is a social contract between the different stakeholders by establishing the bottom-up citizen-led association Naturfelder e.V. The group advocates biodiversity and engages citizens in activities achieving:

- Citizen empowerment and promotion of public ownership of the NBS.
- Risk taking in social innovation,
- Being experimental and open for success but also for failure in the first attempts and developing the know-how for new implementations

Synergies with other proGleg activities

Small spaces on the implementation sites of NBS 1 and NBS 3 were converted into pollinator diversity sites by respective stakeholders. It is also planned to grow pollinator friendly plants in the front area of NBS 4.



NBS 1: Movement park



NBS 3: St. Urbanus urban garden and food forest



NBS 4: Community-managed aquaponics at Hansa Coking Plant

Critical implementation issues and barriers encountered



- At the start, identifying available implementation spaces for the NBS and finding contacts who could offer suitable areas posed significant barriers.
- Over time, the stakeholders network in Huckarde has grown, finding more site options.
- Social distancing rules during the Covid-19 pandemic limited in-person meetings during the media campaign and citizen activation phase.

Links with other external projects or activities

Contact with founding entity Naturfelder e.V. in Issum has been established:

- sharing resources such as branding and website with new Naturfelder associations in the region,
- Issum branch acting as an umbrella organisation.

Communication activities



On the project website all informations about the ProGReg and the LL area are provided:

www.proGReg.dortmund.de

Moreover, die Urbanisten initiated creating a website for proGReg in Huckarde presenting the Dortmund NBS addressing Huckarde citizens and involving them in local projects activities. Currently, the webpage www.hansagrueen.de includes most project activities and implementation steps.

- Kick-off event to activate citizens for the foundation of the association (December 2020)
- Advertising for the event on the PR-channels of the City of Dortmund
- Press release on the foundation of the association (July 2021) led to three newspaper articles in local press
- Networking with projects that share similar goals to exchange information of best practices, such as nordwärts (Kooplab).

Presentation of the association on the www.naturfelder.de website.

Maintenance & Sustainability beyond proGReg

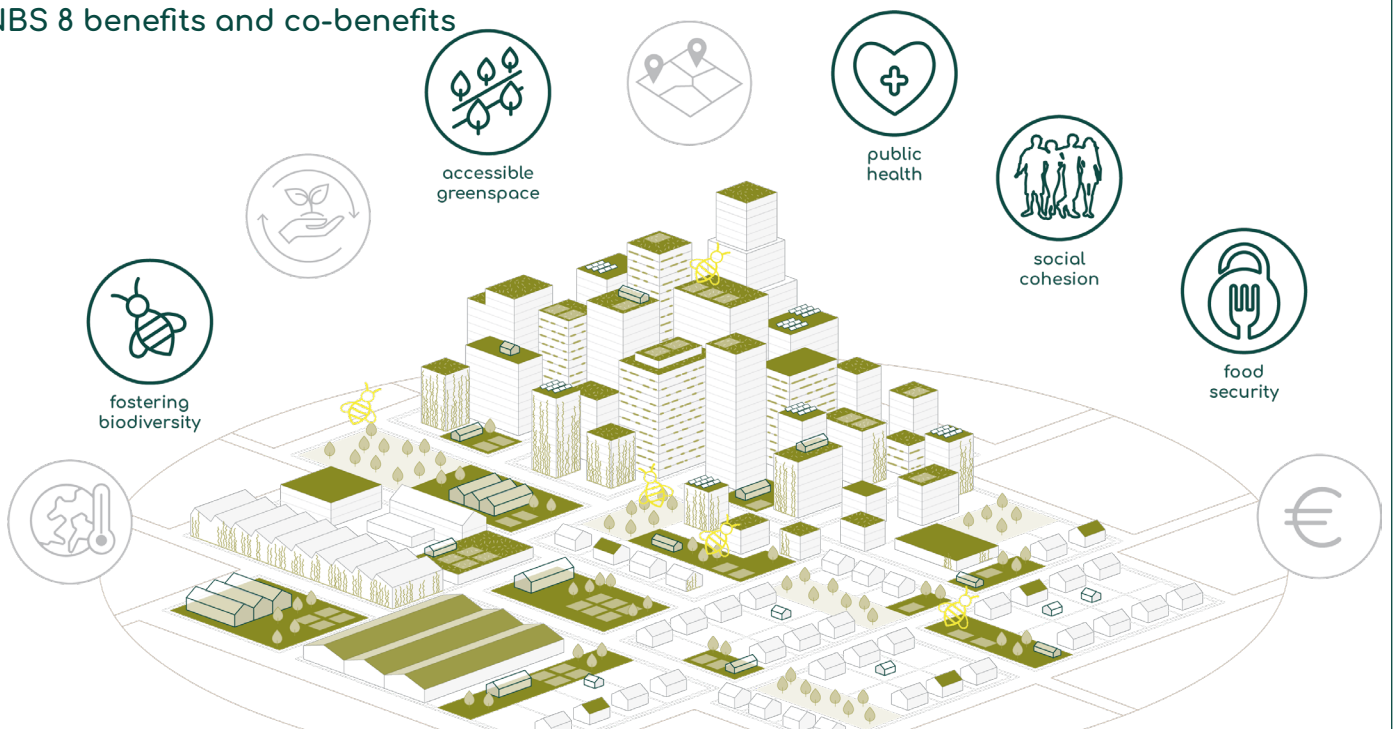
The Department of Green Spaces maintains the implementation sites in public parks in Huckarde. The areas of the allotment garden "Glückauf Hansa" are cared for by the allotment garden association, and the EGLV (Emscher-genossenschaft und Lippeverband) maintains the implementation on their sites. The flower meadow at Grafen Grundschule (primary school) is maintained by the primary school.

NBS benefits and co-benefits for the Living Lab Dortmund-Huckarde

The benefits for living beings in the Huckarde are multiple: environmentally, socially and indirectly contributing to public health through joint outdoor activities.

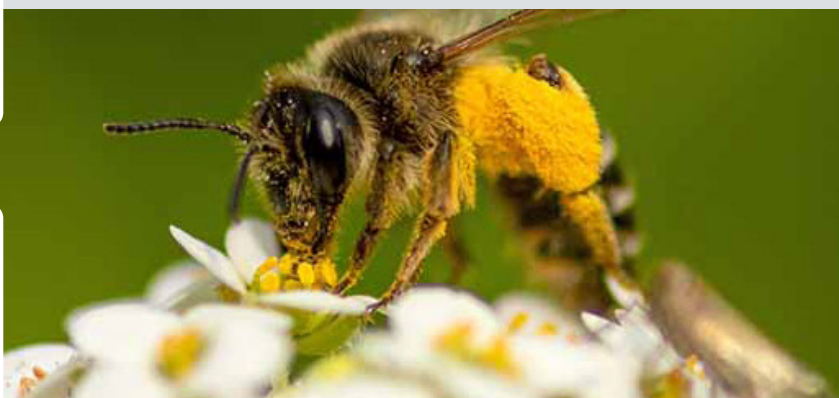
Apart from fostering biodiversity for pollinating insects and contributing to tighter habitat networks, the implemented flower meadows are aesthetically attractive, upgrading derelict or underused existing green spaces. It also serves as a good example of social innovation where citizens are empowered to take responsibility for engaging actively in urban regeneration and transformation of their living environment.

NBS 8 benefits and co-benefits





NBS 8



Pollinator biodiversity

HansaGrün

Improving and monitoring pollinator biodiversity in Huckarde

Contact

✉ dortmund@naturfelder.de

🌐 dortmund.de

hansagruen.de

naturfelder.de



🌐 www.progireg.eu

🐦 @proG!reg

in proG!reg-project

📘 proG!reg: Nature for Renewal

📷 #proG!reg

📺 proG!reg: Nature for Renewal

📺 proG!reg: Nature for Renewal

Partners

HansaGrün



die urbanisten

Stadt Dortmund



Fachhochschule
Südwestfalen
University of Applied Sciences

